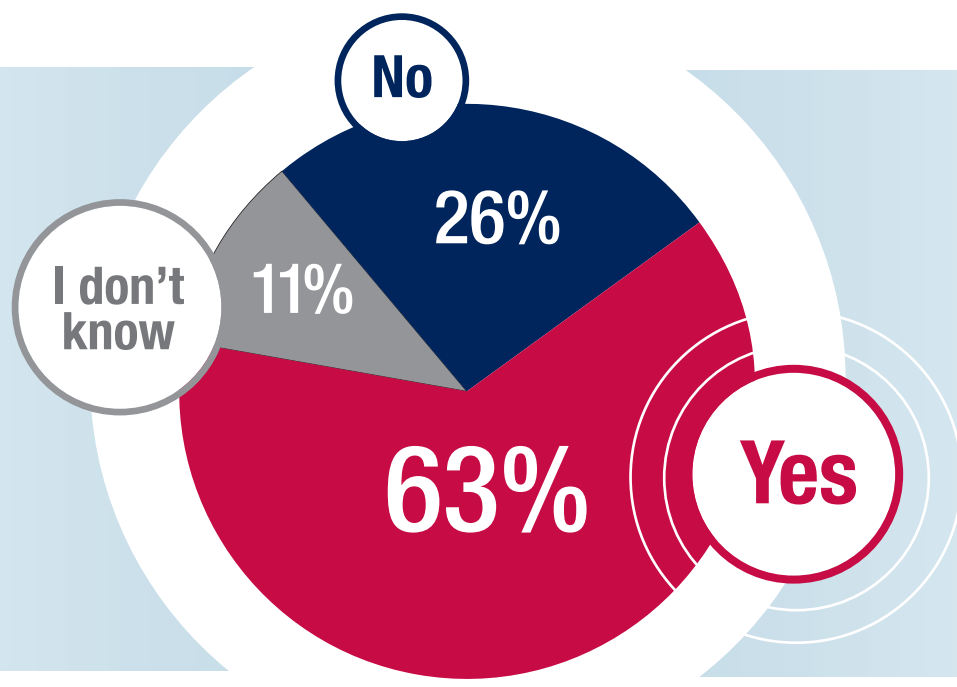


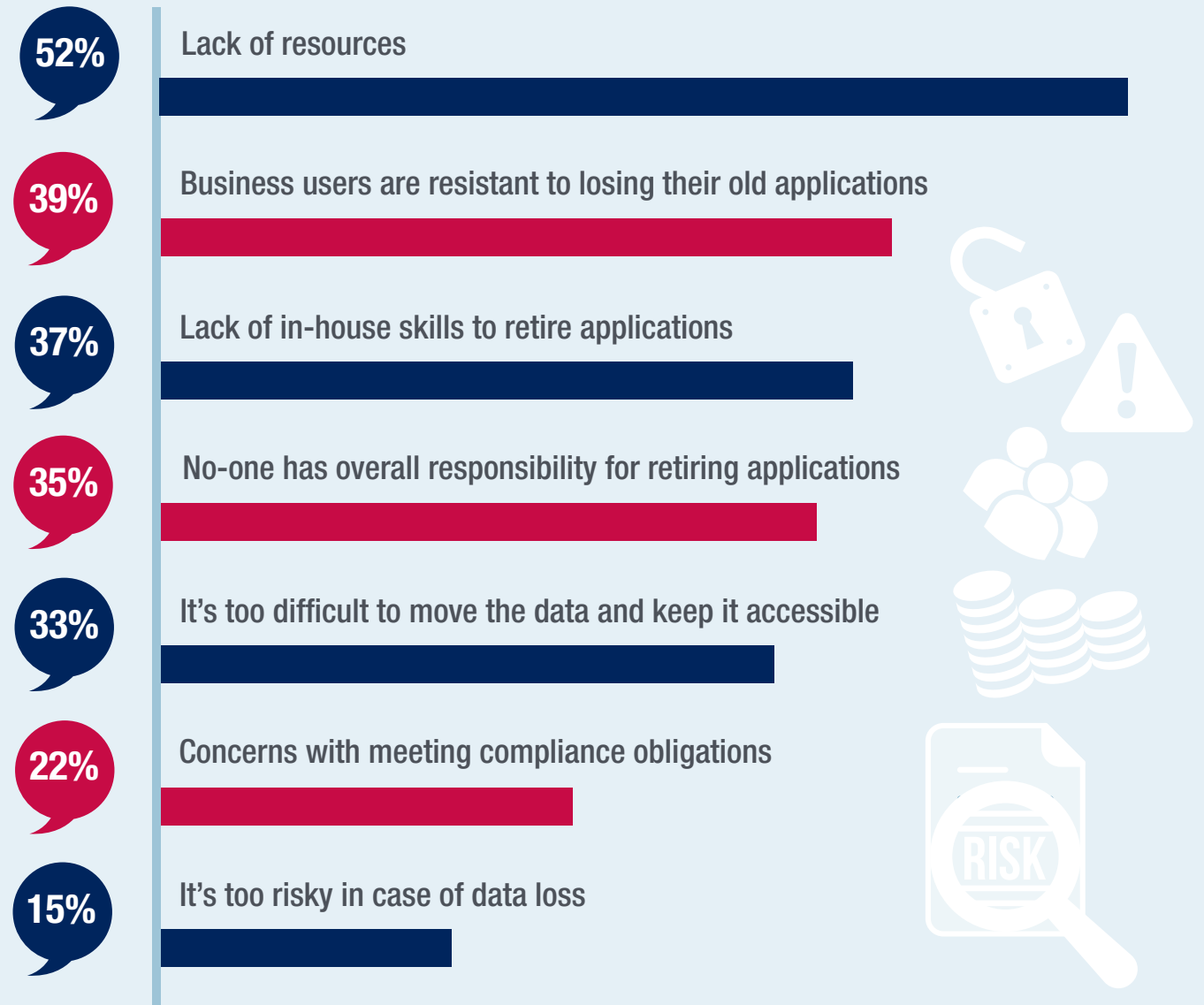
Legacy Application Decommissioning

A survey of IBM i user organizations by SoftLanding Systems

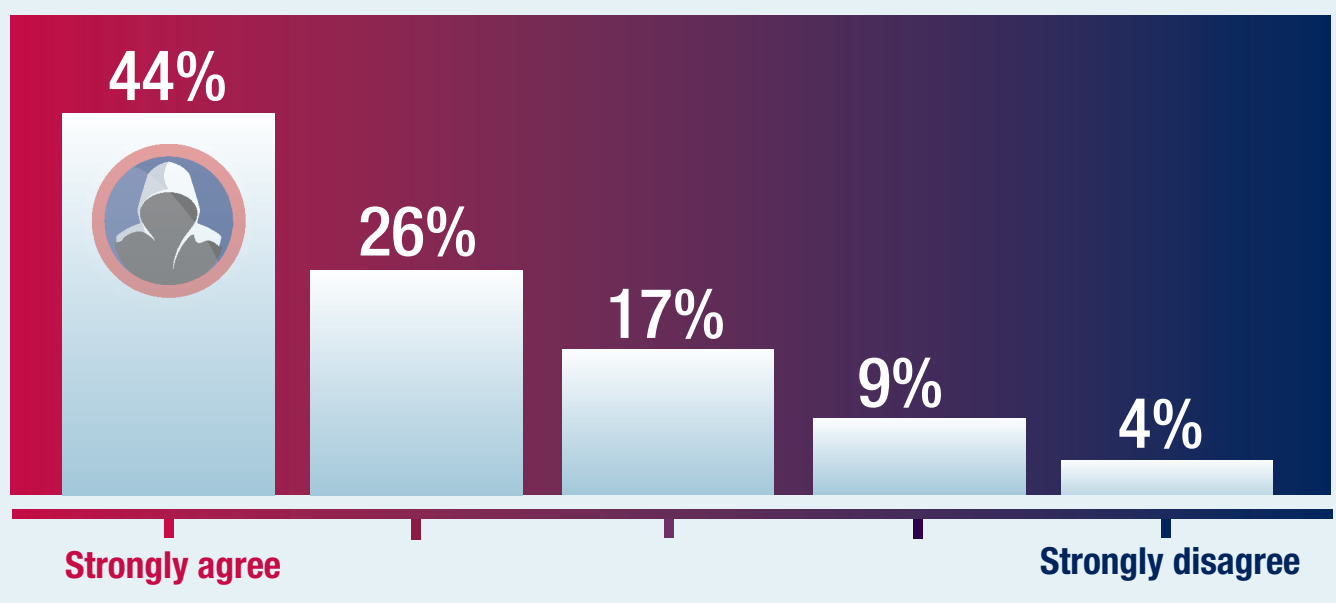
Q Does your organization have any legacy IT applications (either on IBM i or other platforms) that are kept running because the historical data is still useful?



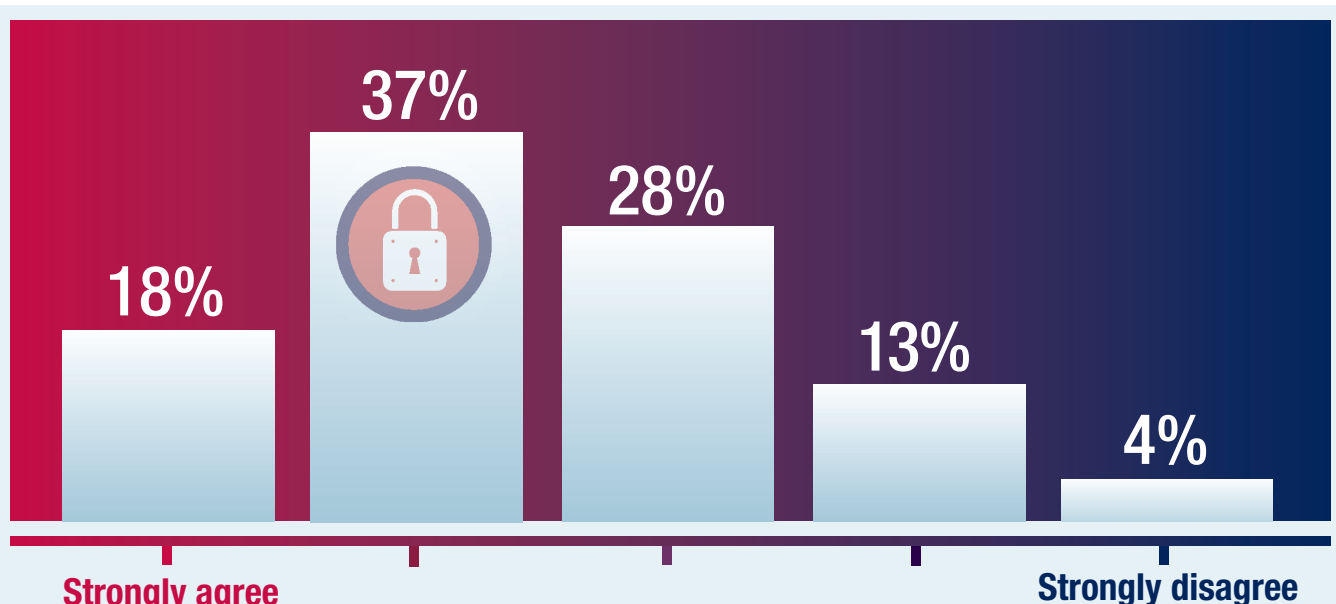
Q In your opinion, why do organizations keep applications running to maintain access to historical data, instead of moving the data elsewhere?



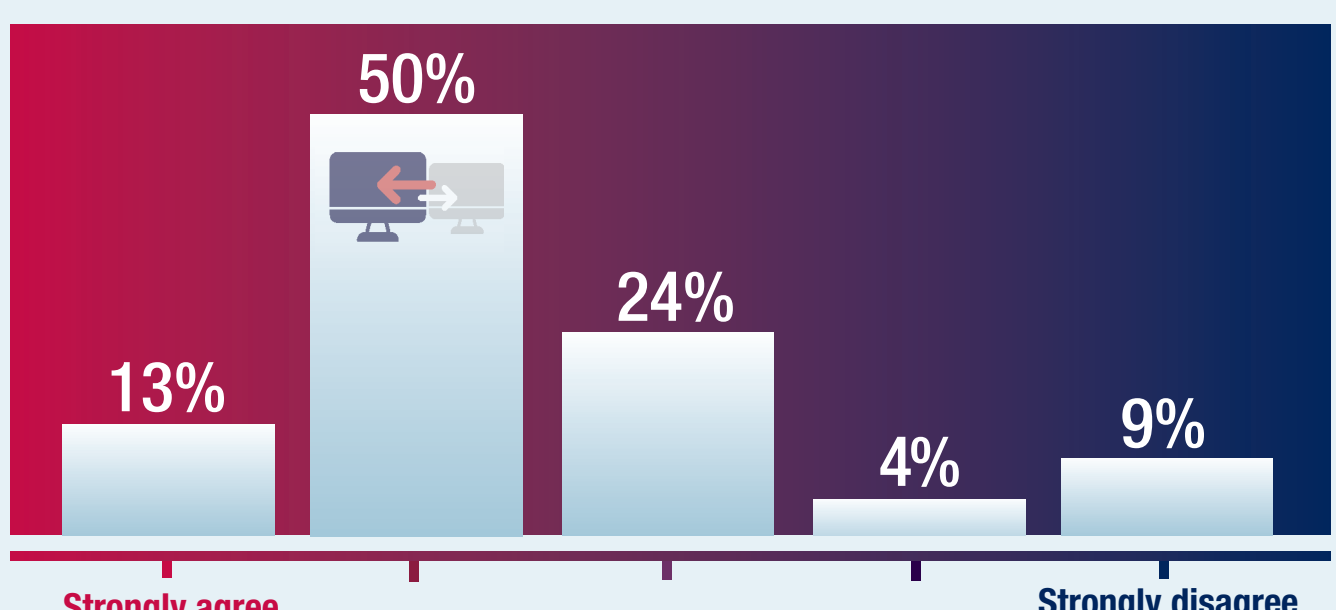
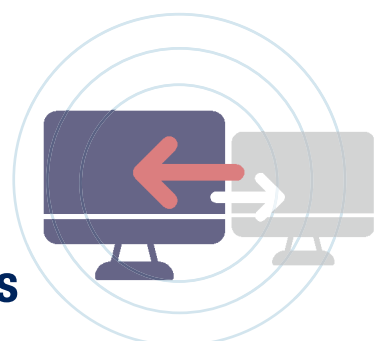
Q Legacy applications running on older operating systems are more vulnerable to security threats



Q It is harder to control access to sensitive data on legacy applications in line with data privacy regulations such as GDPR*



Q Legacy applications are often difficult to integrate with newer systems introduced as part of digital transformation strategies



* General Data Protection Regulation (GDPR)

To find out how SoftLanding Systems could help with your legacy application decommissioning strategy, contact softlanding.uk@macro4.com or visit www.softlanding.com/ecm

